

# SNOWDEN CREEK



# COMMUNITY

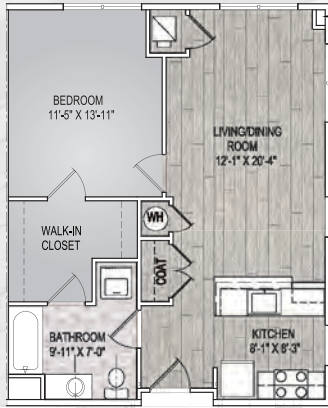
- ▶ 24 Hour Security
- ▶ Hands Free Entrance
- ▶ Multi-Purpose Room & Café
- ▶ Library
- ▶ Business Center with Computer Work Stations
- ▶ Fitness Room
- ▶ Yoga Studio
- ▶ Billiards & Game Room
- ▶ Movie Theater
- ▶ Gazebo & Outdoor Patio
- ▶ Elevators
- ▶ Hospitality Suite
- ▶ Common Area WiFi
- ▶ Art Studio



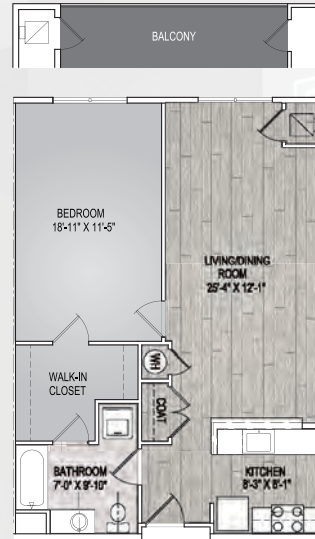
# HOMES

- ▶ 1, 2, and 3 bedroom apartment homes
- ▶ Fully-appointed modern kitchens
- ▶ Ceiling fans in master bedrooms
- ▶ In-home Washers & Dryers
- ▶ Open-Living floorplans w/breakfast bars
- ▶ Cable & Internet Ready
- ▶ Walk-In Closets
- ▶ Balconies (select homes)

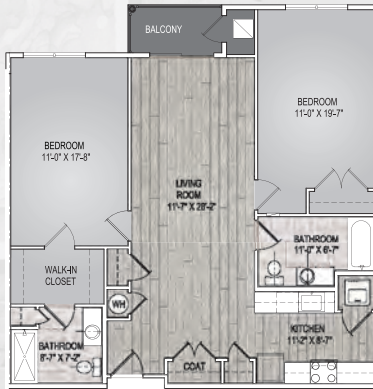
# FLOOR PLANS



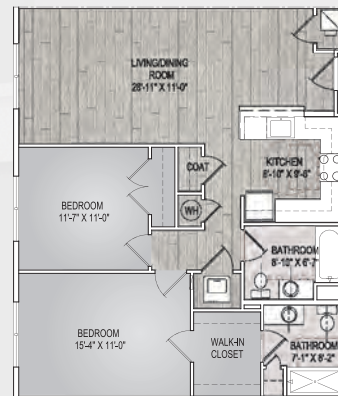
**1 BEDROOM 1A**  
1 Bed / 1 Bath  
729 Square Feet



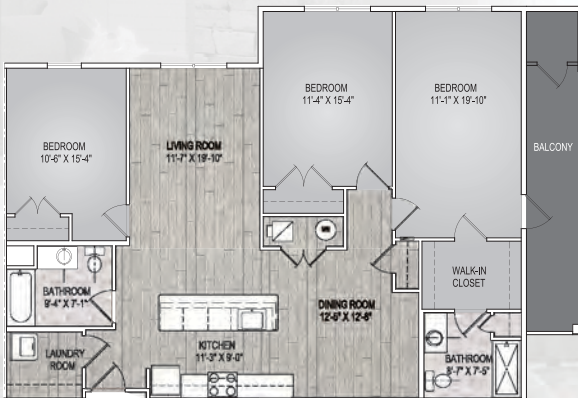
**1 BEDROOM 1B2**  
2 Bed / 2 Bath  
720–842 Square Feet



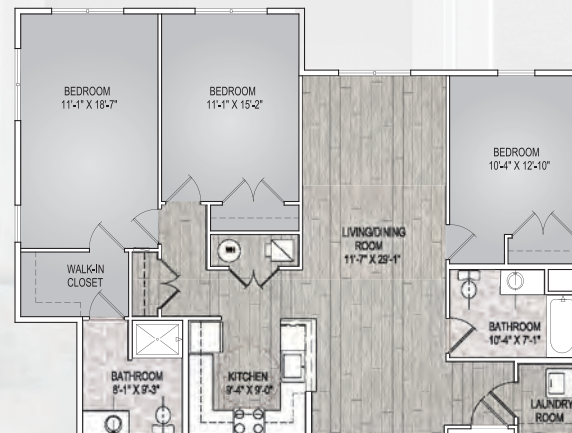
**2 BEDROOM 2B**  
2 Bed / 2 Bath  
1,137–1,197 Square Feet



**2 BEDROOM 2A**  
2 Bed / 2 Bath  
1,084–1,197 Square Feet



**3 BEDROOM 3A**  
3 Bed / 2 Bath  
1,483 Square Feet



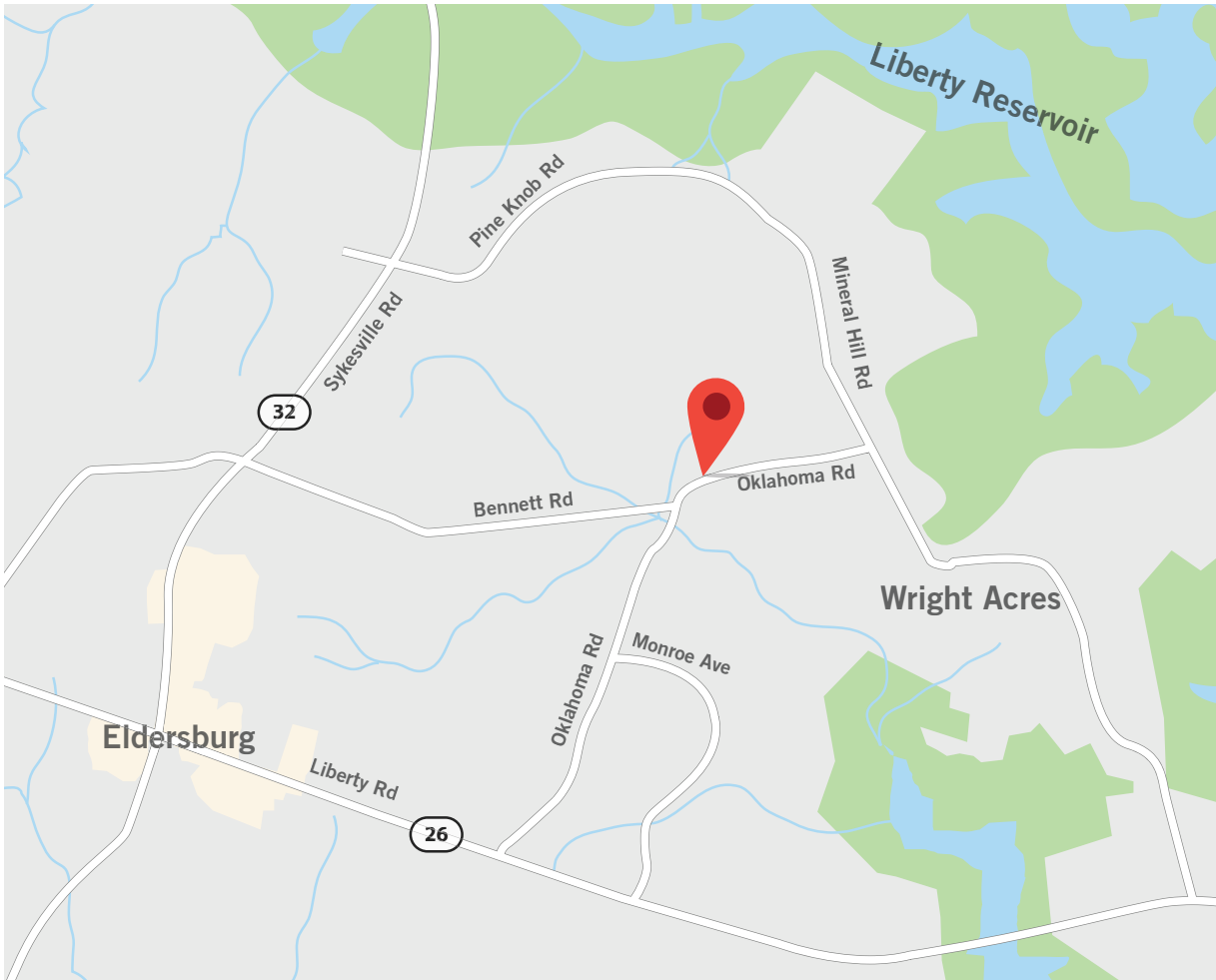
**3 BEDROOM 3AI**  
3 Bed / 2 Bath  
1,424 Square Feet

\*Features and amenities may vary by floorplan. Pricing and availability subject to change. Square footage listed is approximate.

# SNOWDEN CREEK

**5825 OKLAHOMA RD, ELDERSBURG, MD 21784**

SNOWDENCREEK@HREHLLC.COM | (443) 991-7425 | SNOWDENCREEK.COM



Living the good life has never been easier! Come home to Carroll County's newest 62 & better luxury community, Snowden Creek. You'll love indulging in modern amenities, like a fully-equipped fitness center and yoga studio, luxe movie theater, or simply relaxing by the fire with a good book in the community room. Experience peace of mind with conveniences like a hands-free entrance, multiple elevators, and a remote access intercom system. Discover the best Eldersburg has to offer – at Snowden Creek!